

# Mini Sudoku

Puzzles Week 1

Name \_\_\_\_\_

Date \_\_\_\_\_ Block \_\_\_\_\_

4			
		3	
1			
	2		

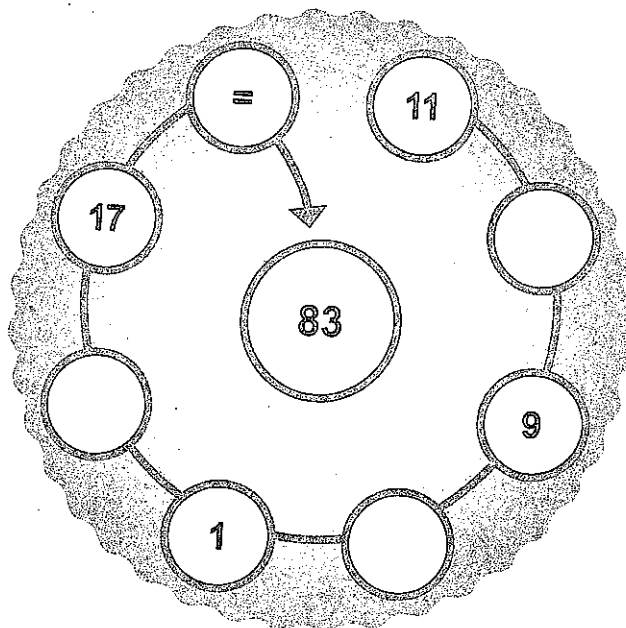
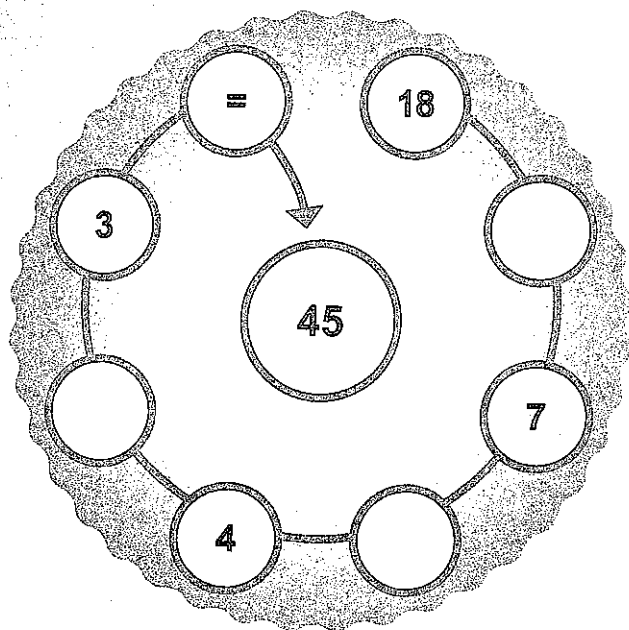
Every row, every column and each of the six smaller boxes of six squares should be filled with a different number from 1 to 6 (a 1 to 4) inclusive. Some numbers are already in place. Can you complete the grid?

2	5	6	4		
1					
				1	
		3	6	5	
	6			4	
5	4		2		

13

# Sum Circle

Fill the three empty circles with the symbols +, - and x in some order, to make a sum which totals the number in the middle. Each symbol must be used once and calculations are made in the direction of travel (clockwise).

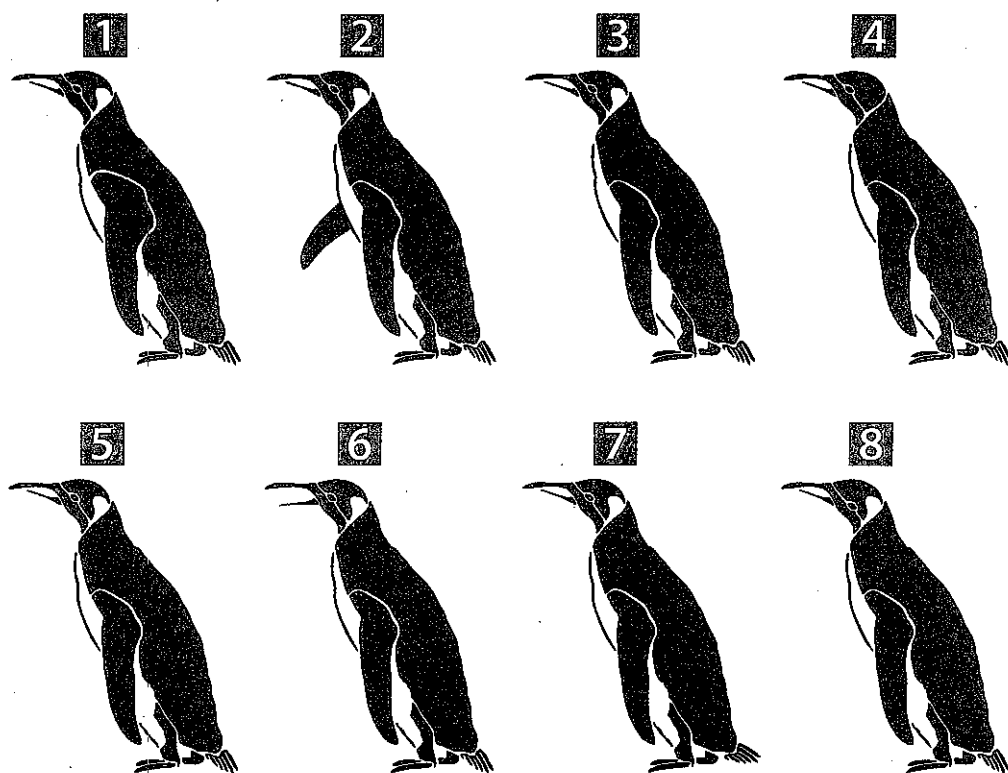


# ROSS MATH

Can you place each digit from 1 to 9 in the yellow spaces in the grid so that the three rows across and the three columns down form correct arithmetic sequences? All calculations (which involve only positive whole numbers) should be performed in order from left to right and top to bottom.

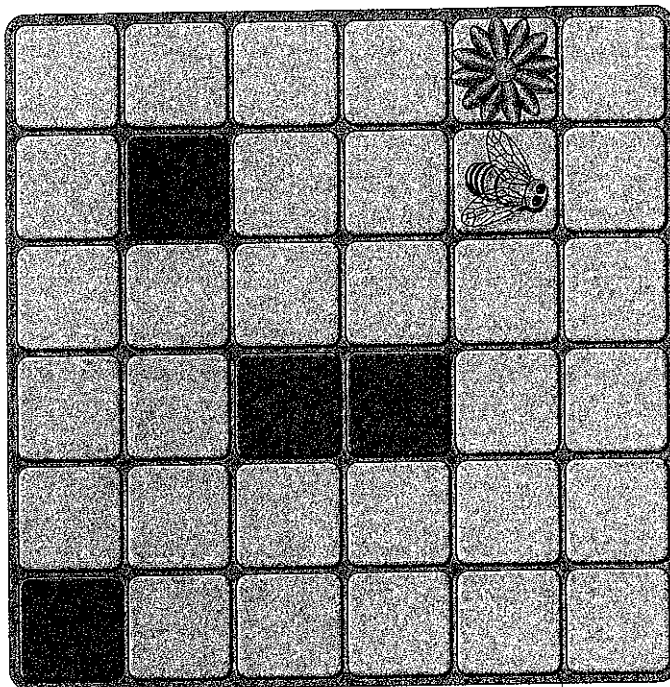
	+		÷		= 2
-		+		-	
	×		÷		= 3
×		÷		×	
	×		-		= 1
= 5		= 1		= 8	

1 2 3 4 5 6 7 8 9



## TWO BY TWO

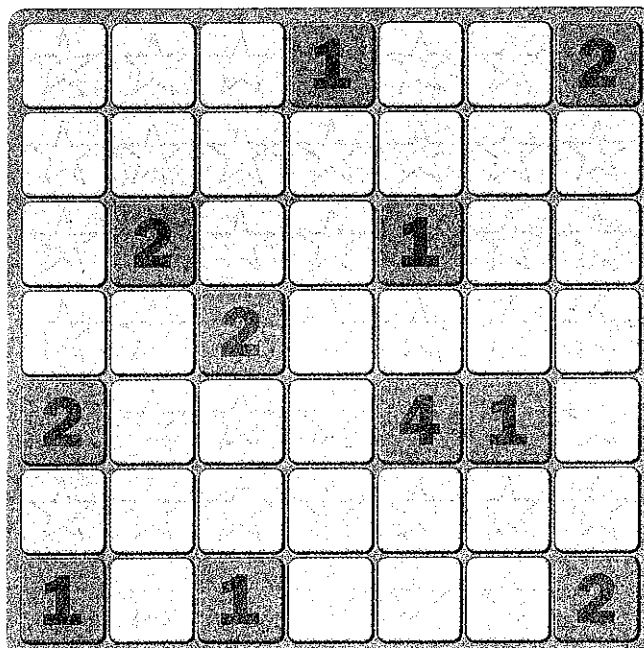
Which two penguins match perfectly?



**GARDEN PATH** Can you find one continuous path from the bee to the flower, passing through every light green box and no brown boxes? You may go through each box only once, and diagonal moves are not allowed.

## STAR MAP

Ten stars are hiding in the 49 squares of this grid, and the numbers provide clues to their locations: A number in a square indicates how many of the adjacent (including diagonally adjacent) squares contain stars. No square with a number in it contains a star, but a star may appear in a square with no adjacent numbers. Can you locate the ten stars?



TEARS + <input type="text"/>	= <input type="text"/>	Makes changes to
TEARS + <input type="text"/>	= <input type="text"/>	Western films, in slang
TEARS + <input type="text"/>	= <input type="text"/>	Take into custody
TEARS + <input type="text"/>	= <input type="text"/>	Ad for an upcoming TV episode
TEARS + <input type="text"/>	= <input type="text"/>	Spuds
TEARS + <input type="text"/>	= <input type="text"/>	Did some rubbernecking
TEARS + <input type="text"/>	= <input type="text"/>	Narrows toward one end

## FINAL WORD

**MIXED MEDIA** Add one letter to the letters of TEARS and then rearrange them to spell the new word clued to the right. Then rearrange the seven added letters to spell a final related word.

## 11 SATURDAY JANUARY 2014

## 12 SUNDAY JANUARY 2014

### QUOTE OF THE WEEK: CROSS QUOTE

Write the letters that are beside the grid into the white spaces of the corresponding row and write the letters above the grid into the yellow spaces of the corresponding column to spell a quotation. Dark squares indicate the ends of words (some words will be broken between the end of one row and the beginning of the next).

